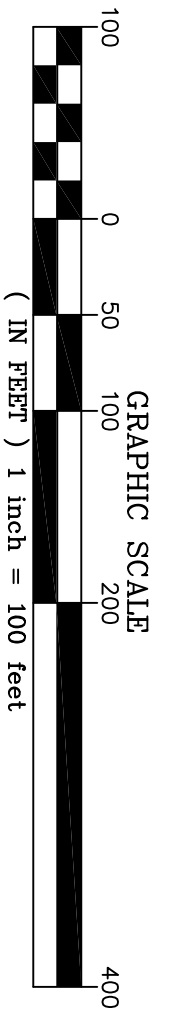
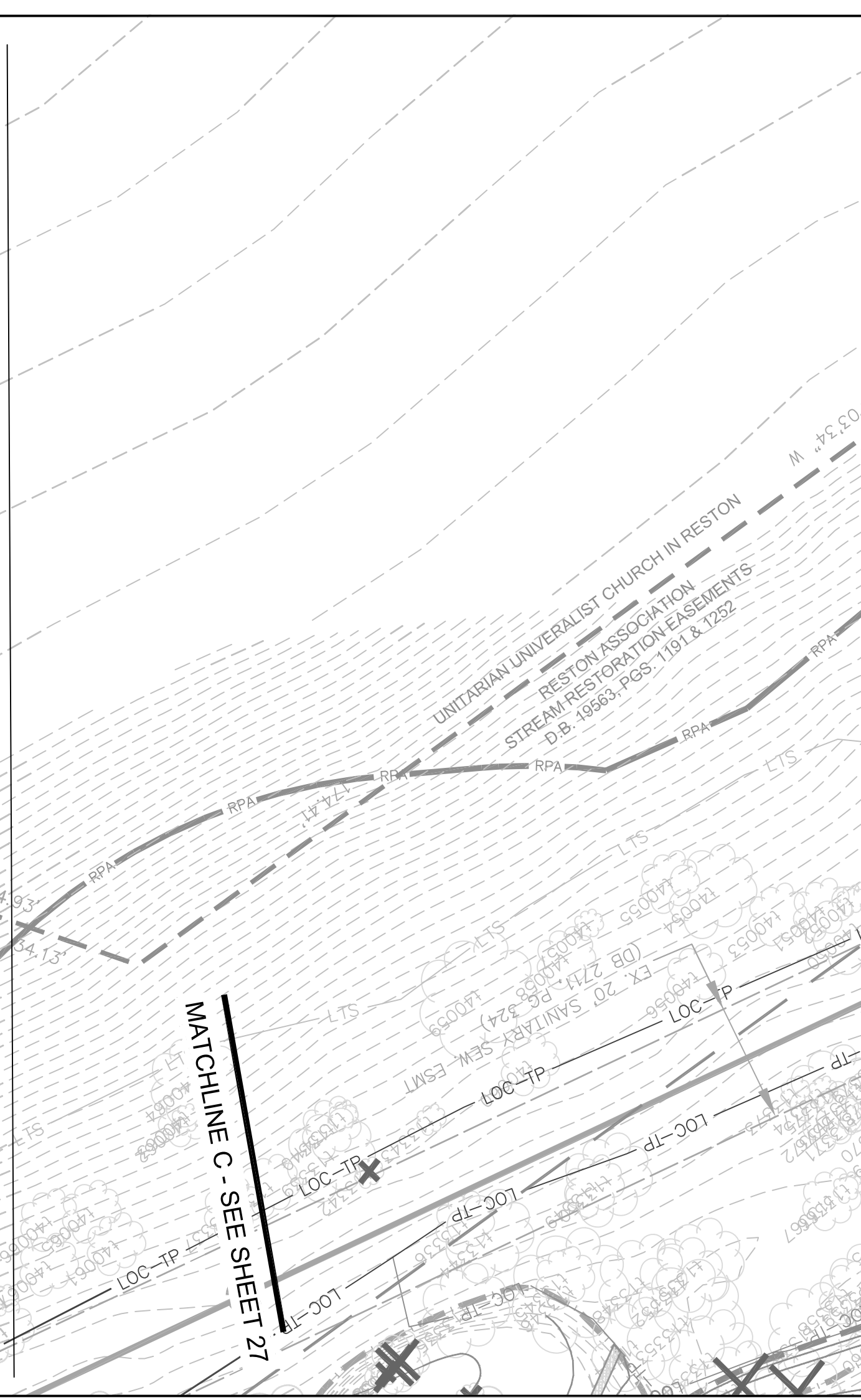
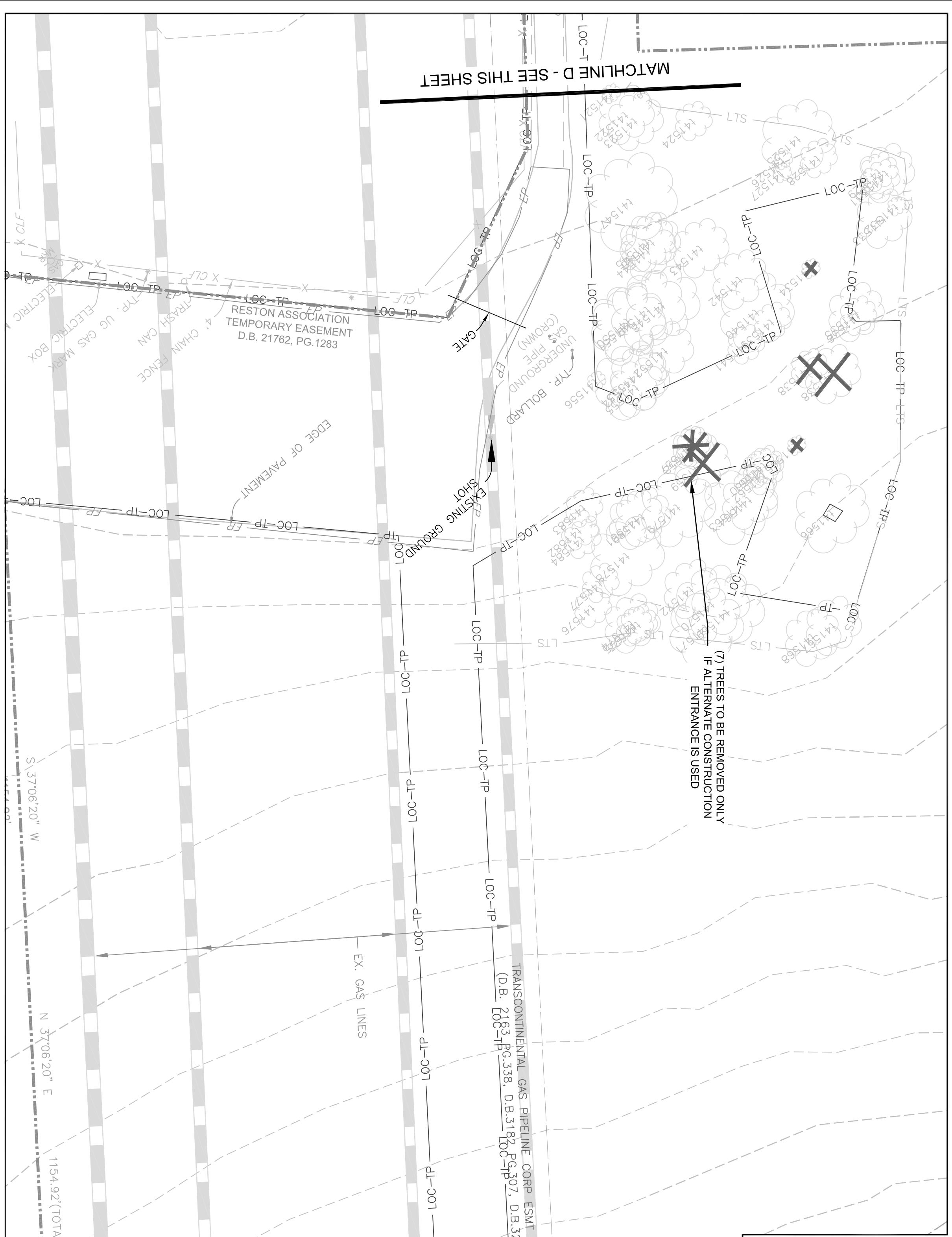
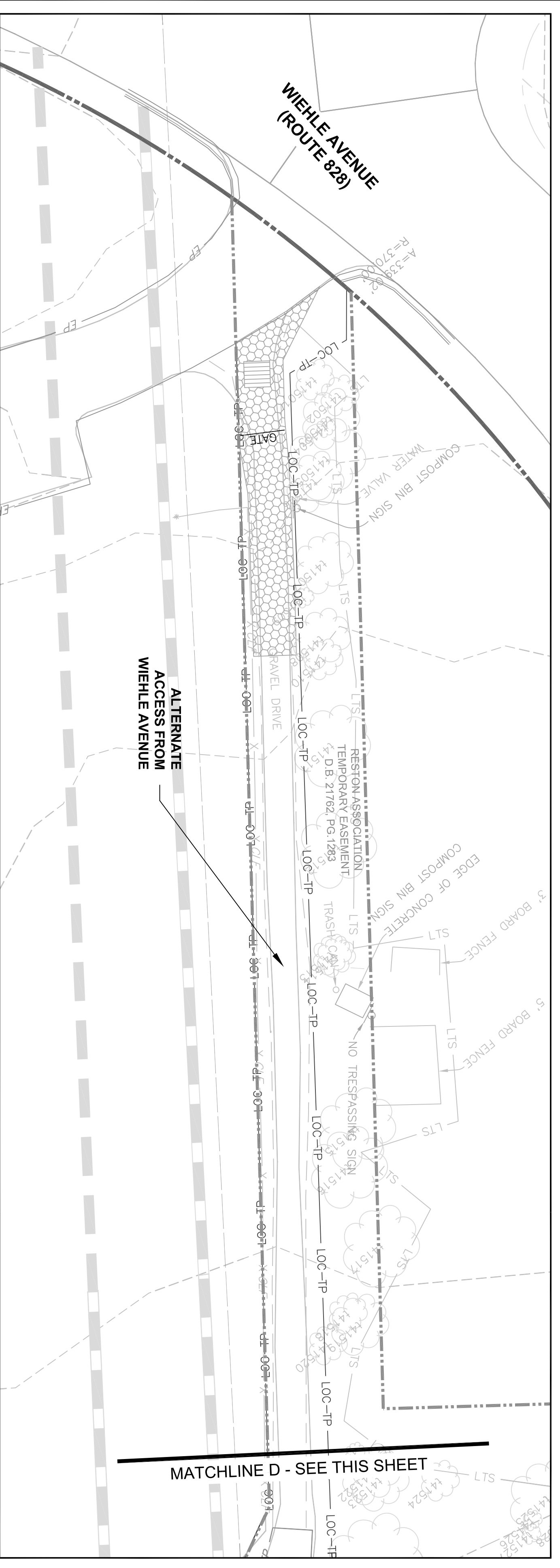


**THIS SHEET TO BE USED FOR TREE REMOVAL PURPOSES ONLY.**

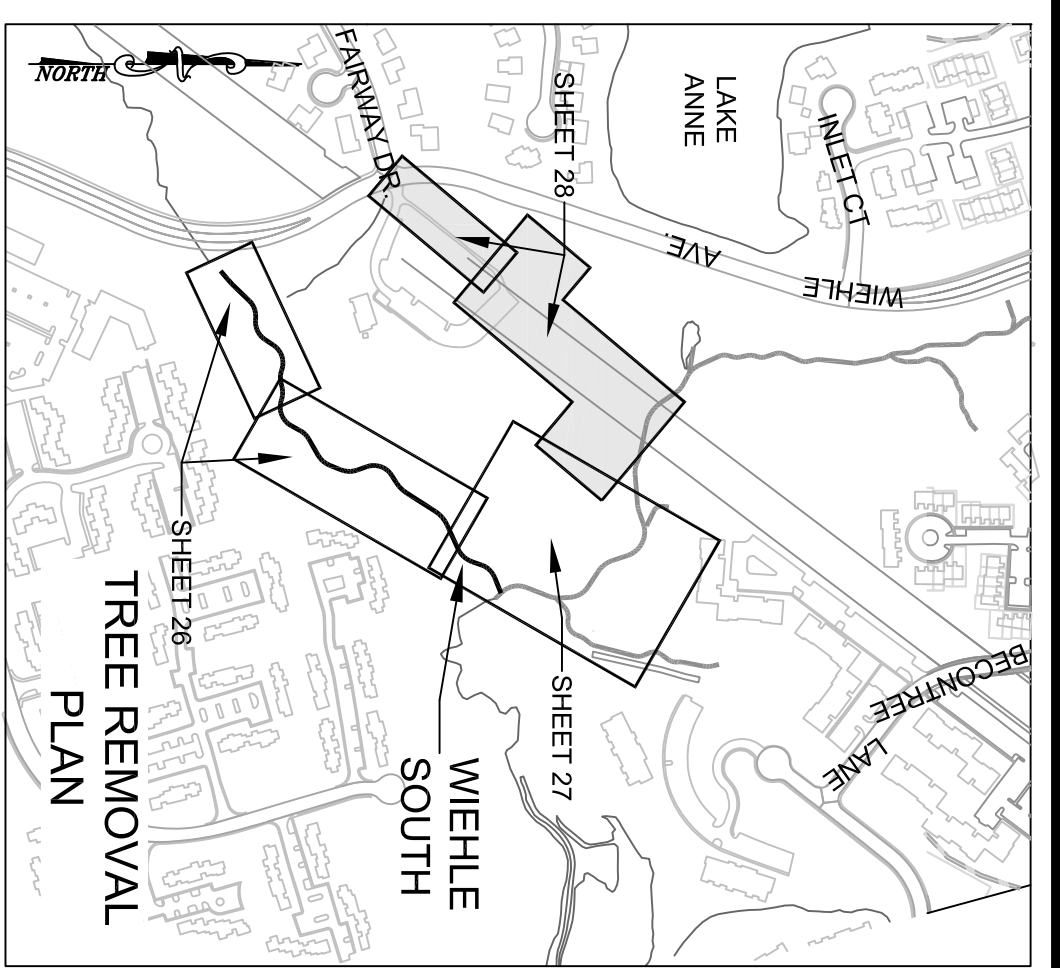


IT IS ASSUMED THAT ALL TREES WITHIN THE LIMITS OF CLEARING WILL NOT BE REMOVED. PRIOR TO CONSTRUCTION, THE LIMITS OF CLEARING (LOC) SHALL BE WALKED BY WSSI STAFF TO CONFIRM TREE REMOVAL. IN THE EVENT THAT THE CONTRACTOR BELIEVES A TREE WITHIN THE LOC COULD BE SAVED, THE CONTRACTOR SHALL CONTACT WETLAND STUDIES AND SOLUTIONS, INC. AND HAVE THE PROJECT ENGINEER DETERMINE IF THE TREE SHOULD BE SAVED OR REMOVED.



**TREE REMOVAL LEGEND**

--- (dashed line)	PROPERTY BOUNDARY	--- (dashed line)	NONPERENNIAL STREAM (EXISTING TOP OF BANK)
--- (dashed line)	COMBINED STREAM ESMNT AND TEMP. GRADING & CONST. / INGRESS-EGRESS ESMNT	--- (dashed line)	PERENNIAL STREAM (EXISTING TOP OF BANK)
--- (dashed line)	STREAM ESMNT	--- (dashed line)	JURISDICTIONAL WETLANDS
--- (dashed line)	TEMP. GRADING & CONSTRUCTION ESMNT / INGRESS-EGRESS ESMNT	--- (dashed line)	LIMITS OF CLEARING/TREE PROTECTION
--- (dashed line)	EXISTING EASEMENTS	--- (dashed line)	SUPER SILT FENCE
--- (dashed line)	EXISTING INFRASTRUCTURE	--- (dashed line)	TREE TO BE REMOVED
--- (dashed line)	EXISTING SANITARY SEWER	--- (dashed line)	TREE ALREADY PROPOSED FOR REMOVAL AS PART OF WIEHLE NORTH RESTORATION (PROVIDED UNDER SEPARATE COVER)
--- (dashed line)	EXISTING CONTOURS (0.5')	--- (dashed line)	
--- (dashed line)	PROPOSED CONTOURS	---	
--- (dashed line)	PROPOSED STREAM CENTERLINE	---	
--- (dashed line)	PROPOSED TOP OF BANK	---	



**REVISIONS**

No.	Date	Description	Rev. By	App. By

Horizontal Datum: VCS NAD 83  
Vertical Datum: NGVD 29  
Boundary and Topo Source: WSSI and Fairfax Digital Data

Design: [ ]  
KLP: [ ]  
FRG: [ ]

DATE: AUGUST 2012      SCALE: 1" = 20'



Northern Virginia Stream Restoration Bank  
Colvin Run - Wiehle South  
Fairfax County, Virginia

**Tree Removal Plan (cont'd)**

Copyright © 2012 Wetland Studies and Solutions, Inc.

5300 Wellington Branch Drive, Suite 100 • Gainesville, VA 20155  
Phone 703 679 5600 • Fax 703 679 5601  
wetlandstudies.com